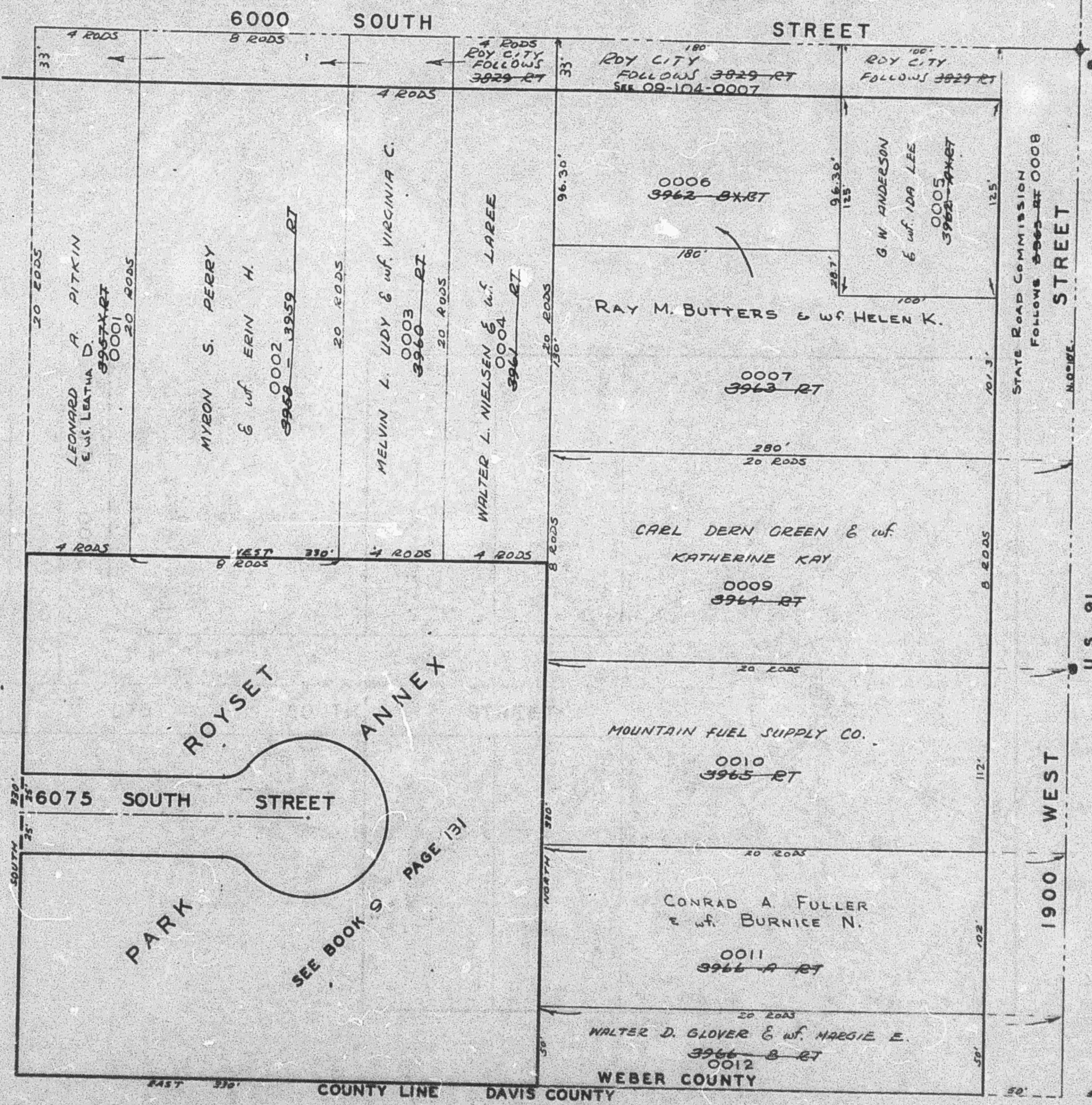


TAXING UNIT: 41

NE. 1/4 OF NE. 1/4 OF SE. 1/4  
SECTION 23, T.5 N., R. 2 W., S.L.B.&M.  
IN ROY CITY  
SCALE - 1" = 50'

130

PREFIX 09-130-



SEE P. 132

NOTE: DEED IN BOOK 140, P. 430, INDICATES STATE ROAD MARKER MAY BE 4.7 FEET SOUTH FROM OLD CORNER. THEREFORE, BEG. POINT 24 RODS (828') FROM OLD CORNER = 391.3 FEET S. FROM NEW MARKER.